

AVAILABLE

JOHN M. VAIL BA, CMA, C. DIR

REAL ESTATE AND BUSINESS BROKER
CERTIFIED MANAGEMENT ACCOUNTANT
CHARTERED DIRECTOR

HUMAN RESOURCES COMPENSATION COMMITTEE CERTIFIED

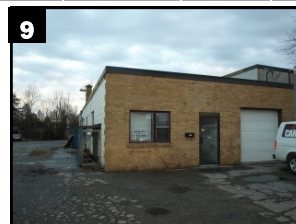
The *availability* Report

FEBRUARY 2012

| no. | sq ft | Type | Zone | Sale/Lease | Rate | TMI | per mo | Utilities | Drive in | Dock | Finished | Ht | Power | Town/City | Comments |
|-----|-------|----------------|------|-------------|----------|---------|-------------|-----------|----------|------|----------|----|-----------|-----------|----------------------------|
| 1 | 400 | Office | T1 | For Lease | \$ 18.75 | \$ - | \$ 625.00 | included | n | n | 100 | 9 | office | Oakville | open office area |
| 2 | 400 | Office | E1 | For Lease | \$ 16.50 | \$ - | \$ 550.00 | included | n | n | 100 | 9 | office | Oakville | furnished |
| 3 | 500 | Office | F1 | For Lease | \$ 18.00 | \$ - | \$ 750.00 | included | n | n | 100 | 9 | office | Oakville | open office area |
| 4 | 700 | Office | E1 | For Lease | \$ 14.60 | \$ - | \$ 851.67 | included | n | n | 100 | 9 | office | Oakville | one office/open area |
| 5 | 750 | Office | E2 | For Lease | \$ 12.00 | \$ - | \$ 750.00 | excluded | n | n | 100 | 9 | office | Oakville | second floor |
| 6 | 900 | Office | T1 | LEASED 7/11 | \$ 18.67 | \$ - | \$ 1,400.25 | extra | n | n | 100 | 9 | office | Oakville | fronts QEW |
| 7 | 1000 | Office | E1 | LEASED10/11 | \$ 14.60 | \$ - | \$ 1,216.67 | included | n | n | 100 | 9 | office | Oakville | nice offices at Dorval |
| 8 | 1000 | Office | T1 | For Lease | \$ 15.00 | \$ 9.50 | \$ 2,041.67 | extra | n | n | 100 | 0 | office | Oakville | class A space/elevator |
| 9 | 1050 | Industrial | T1 | For Lease | \$ 12.00 | \$ - | \$ 1,050.00 | extra | n | n | 20 | 9 | 600v60a | Oakville | rare small industrial unit |
| 10 | 1100 | Office | GE | LEASED2/11 | \$ 16.36 | \$ - | \$ 1,499.67 | included | n | n | 100 | 9 | office | Oakville | Burlington |
| 11 | 1100 | Office | C3R | For Lease | \$ 15.50 | \$ - | \$ 1,420.83 | included | n | n | 100 | 9 | office | Oakville | 5 offices and open area |
| 12 | 1200 | Office | T1 | For Lease | \$ 14.00 | \$ - | \$ 1,400.00 | included | n | n | 100 | 9 | office | Oakville | 2nd floor economical |
| 13 | 1250 | Retail Office | C3A | LEASED10/11 | \$ 7.00 | \$ 6.00 | \$ 1,354.17 | extra | n | n | 100 | 9 | office | Oakville | ground floor offices |
| 14 | 1300 | Retail | C3A | For Lease | \$ 12.00 | \$ 9.50 | \$ 2,329.17 | extra | n | n | 100 | 9 | 240v200a | Oakville | former tanning salon |
| 15 | 1400 | Office | E1 | For Lease | \$ 13.50 | \$ - | \$ 1,575.00 | included | n | n | 100 | 9 | office | Oakville | second floor |
| 16 | 1400 | Office | E1 | LEASED1/12 | \$ 15.00 | \$ - | \$ 1,750.00 | included | n | n | 100 | 9 | office | Oakville | ground floor |
| 17 | 1500 | Office | E1 | For Lease | \$ 15.00 | \$ - | \$ 1,875.00 | included | n | n | 100 | 9 | office | Oakville | open and two offices |
| 18 | 1600 | Shop | | For Lease | \$ 12.00 | \$ - | \$ 1,600.00 | extra | 1 | n | 0 | 12 | 220v | Hamilton | shop with level door |
| 19 | 1650 | Automotive | E2 | For Lease | \$ 16.00 | \$ - | \$ 2,200.00 | extra | 3 | n | 0 | 14 | 60a600v | Oakville | 3 auto repair bays |
| 20 | 1800 | Retail | C3A | LEASED07/11 | \$ 14.00 | \$ 9.50 | \$ 3,525.00 | extra | n | n | 100 | 16 | 240v/200a | Oakville | set up as convenience |
| 21 | 1858 | Office | T1 | For Lease | \$ 10.50 | \$ 6.50 | \$ 2,632.17 | extra | n | n | 100 | 9 | office | Oakville | functional space |
| 22 | 2012 | Open Showroom | T1 | For Lease | \$ 6.50 | \$ 6.50 | \$ 2,179.67 | extra | 1 | n | 10 | 14 | 600v60a | Oakville | clean warehouse space |
| 23 | 2252 | Retail Warehse | C3A | LEASED 1/12 | \$ 7.00 | \$ 4.55 | \$ 2,167.55 | extra | y | n | 50 | 16 | 600v60a | Oakville | showroom |



Need a Valuation of Your Property? Contact John for a Confidential Market Evaluation



**Great Canadian Realty,
Brokerage**
11-1155 North Service Road West
Oakville, Ontario L6M 3E3

(905)842-8690 DIRECT
(905)338-0202 OFFICE
JohnVail.com

Cell: 905-301-9000
Toll Free: 1-888-842-8690
Email: John@JohnVail.com



AVAILABLE

JOHN M. VAIL BA, CMA, C. DIR

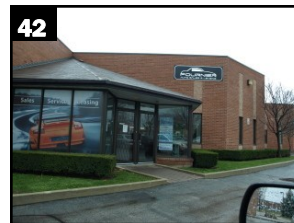
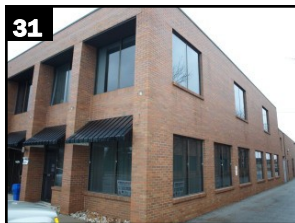
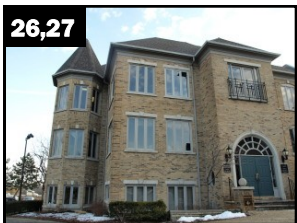
REAL ESTATE AND BUSINESS BROKER
CERTIFIED MANAGEMENT ACCOUNTANT
CHARTERED DIRECTOR

HUMAN RESOURCES COMPENSATION COMMITTEE CERTIFIED

**25 Years of Experience
Working for You**

SINCE 1987

| no. | sq ft | Type | Zone | Sale/Lease | Rate | TMI | per mo | Utilities | Drive in | Dock | Finished | Ht | Power | Town/City | Comments |
|-----|-------|------------------|------|--------------|--------------|---------|-------------|-----------|----------|------|----------|----|-----------|-----------|--------------------------|
| 24 | 2273 | Office | C3A | For Lease | \$ 21.11 | \$ - | \$ 4,000.00 | included | n | n | 100 | 9 | office | Oakville | upscale development |
| 25 | 2273 | Office | C3A | For Sale | \$ 560,000 | n/a | n/a | n/a | n | n | 100 | 9 | office | Oakville | upscale development |
| 26 | 2310 | Office | C3A | For Lease | \$ 20.77 | \$ - | \$ 4,000.00 | included | n | n | 100 | 9 | office | Oakville | upscale development |
| 27 | 2310 | Office | C3A | For Sale | \$ 560,000 | n/a | \$ 560,000 | n/a | n | n | 100 | 9 | office | Oakville | upscale development |
| 28 | 2500 | Retail Warehse | C3A | LEASED 5/11 | \$ 12.00 | \$ 6.00 | \$ 3,750.00 | extra | y | n | 100 | 14 | 600v60a | Oakville | fronts Speers |
| 29 | 2500 | Retail | C3A | For Lease | \$ 12.00 | \$ 9.50 | \$ 4,479.17 | extra | n | n | 40 | 14 | 240v/200a | Oakville | former butcher shop |
| 30 | 2800 | Automotive | E2 | For Lease | \$ 16.00 | \$ - | \$ 3,733.33 | extra | 5 | 0 | 4 | 14 | 600v60a | Oakville | design built auto unit |
| 31 | 2829 | Office | T1 | For Lease | \$ 10.00 | \$ 6.50 | \$ 3,889.88 | extra | n | n | 100 | 9 | office | Oakville | ground floor corner |
| 32 | 3000 | Automotive | E2 | LEASED 11/11 | \$ 5.75 | \$ 3.01 | \$ 2,190.00 | extra | 1 | n | 5 | 16 | 600v60a | Oakville | shop space |
| 33 | 3000 | Retail | C3A | For Lease | \$ 12.00 | \$ 9.50 | \$ 5,375.00 | extra | n | n | 100 | 12 | 600v60a | Oakville | showroom fronts Bronte |
| 34 | 3396 | Restaurant | C3A | LEASED 11/11 | \$ 14.00 | \$ 4.55 | \$ 5,249.65 | extra | n | n | 90 | 12 | showroom | Oakville | fronts Speers |
| 35 | 3400 | Commercial | C3A | LEASED 2/11 | \$ 6.50 | \$ 3.50 | \$ 2,833.33 | extra | n | n | 100 | 16 | 600v60a | Oakville | set up as fitness studio |
| 36 | 3800 | Retail | C3A | For Lease | \$ 12.00 | \$ 9.50 | \$ 6,808.33 | extra | n | n | 100 | 14 | 600v200a | Oakville | huge parking lot |
| 37 | 4340 | Industrial | E2 | LEASED 1/11 | \$ 5.75 | \$ 3.00 | \$ 3,164.58 | extra | 1 | n | 10 | 18 | 600v60a | Oakville | 25% office |
| 38 | 4583 | Office | C3A | For Lease | \$ 20.94 | \$ - | \$ 8,000.00 | included | n | n | 100 | 9 | office | Oakville | upscale development |
| 39 | 4583 | Office | C3A | For Sale | \$ 1,120,000 | n/a | n/a | n/a | n | n | 100 | 9 | office | Oakville | upscale development |
| 40 | 4841 | Office Warehouse | T1 | For Lease | \$ 8.55 | \$ 6.50 | \$ 6,069.55 | extra | 1 | n | 58 | 14 | 600v60a | Oakville | high office content unit |
| 41 | 5300 | Office Warehse | E1 | LEASED 1/12 | \$ 14.00 | \$ - | \$ 6,183.33 | extra | 1 | n | 80 | 16 | 600v60a | Oakville | high office content |
| 42 | 6488 | Industrial | E2 | LEASED 6/11 | \$ 5.75 | \$ 3.00 | \$ 4,730.83 | extra | 1 | 1 | 10 | 18 | 600v200a | Oakville | dock and drive |
| 43 | 7319 | Ind/Auto | E2 | For Lease | \$ 6.50 | \$ 3.01 | \$ 5,800.31 | extra | 1 | 0 | 5 | 16 | 600v60a | Oakville | former car dealer |
| 44 | 11155 | Industrial | E2 | LEASED10/11 | \$ 5.75 | \$ 3.00 | \$ 8,133.85 | extra | 3 | 0 | 10 | 18 | 600v200a | Oakville | high power 14 ft doors |
| 45 | 12500 | Industrial/Auto | E2 | For Sale | \$ 1,687,500 | n/a | n/a | extra | y-4 | n | 20 | 16 | 600v200a | Oakville | sale/leaseback |



Can't find what you're looking for? Contact John and he will source the ideal property for you!



Great Canadian Realty,
Brokerage
11-1155 North Service Road West
Oakville, Ontario L6M 3E3

(905)842-8690 DIRECT
(905)338-0202 OFFICE
JohnVail.com

Cell: 905-301-9000
Toll Free: 1-888-842-8690
Email: John@JohnVail.com

